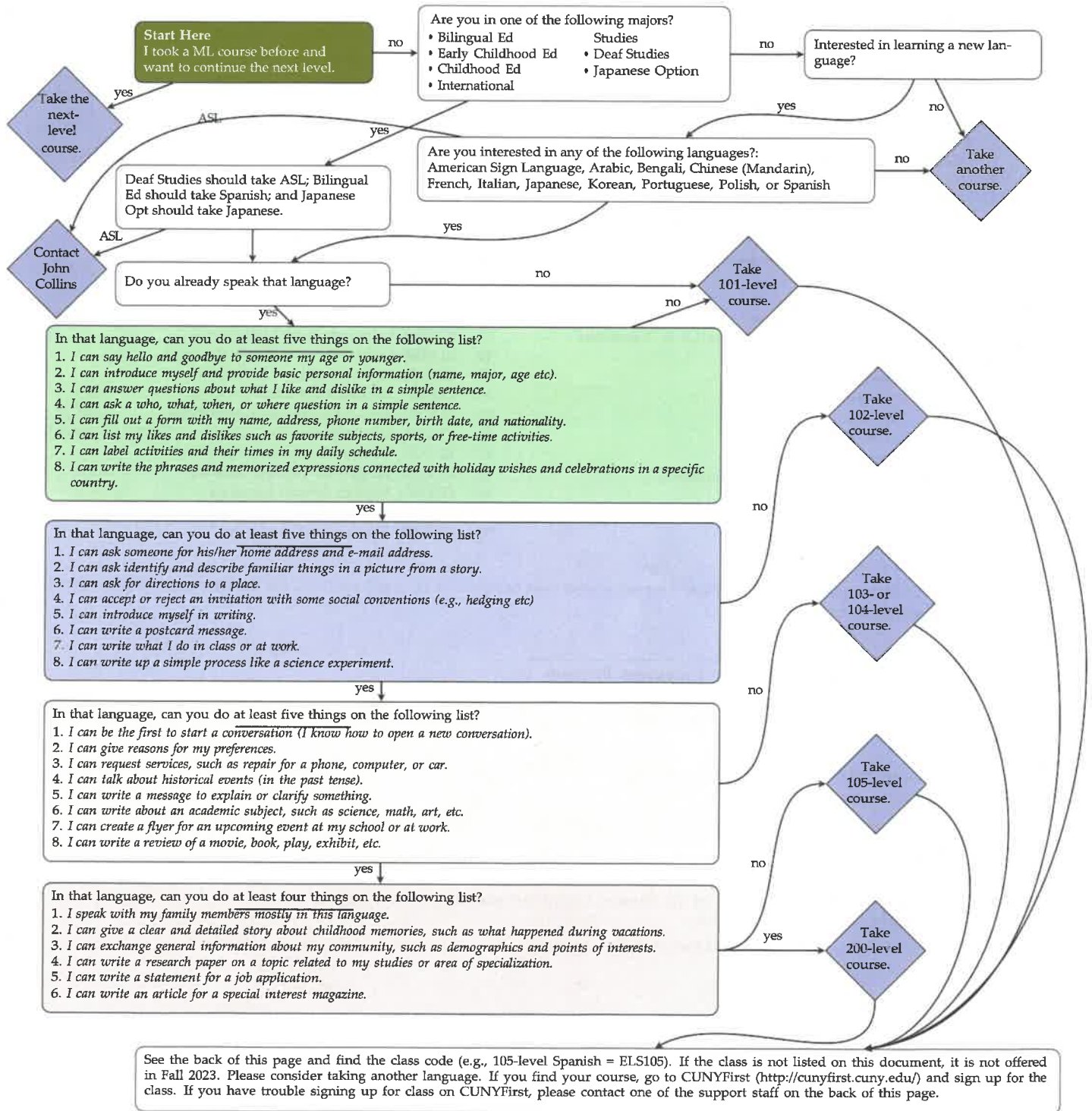


Self-assessment Flowchart for Modern Language Registration

Luis Guzmán Valerio
lguzmanvalerio@lagcc.cuny.edu

The Modern Languages (ML) Program has replaced the placement exam with students' self-assessment for the placement of ML courses. We have removed all placement exam requirements for the ML courses so that students can sign up for any level of ML course on CUNYFirst by themselves based on their self-assessment of ML proficiency. The flowchart below helps students identify an appropriate ML course to sign up for the upcoming semester. Start from **Start Here** and follow the instructions.



Brief Introduction to the Modern Languages Courses

The Modern Languages (ML) Program regularly offers American Sign Language, Arabic, Bengali, Chinese (Mandarin), French, Italian, Japanese, Korean, Portuguese, Polish, and Spanish. LaGuardia students in any major can take up to two ML courses in Pathways (WCGI and Additional Core) and students in some majors (i.e., Bilingual Ed, Early Childhood Ed, Childhood Ed, International Studies, Deaf Studies, and Japanese) are required to take the ML course as part of their Program Core.

List of Modern Languages Courses (only those active in Fall 2022)

- | | |
|---|--|
| 1. ELA101: Elementary Arabic 1 | 27. ELK250: Modern Korean Literature in Translation |
| 2. ELA102: Elementary Arabic 2 | 28. ELM101: American Sign Language 1 |
| 3. ELA105: Arabic for Heritage Speakers | 29. ELM102: American Sign Language 2 |
| 4. ELA201: Modern Arabic Literature | 30. ELM103: American Sign Language 3 |
| 5. ELA250: Modern Arabic Literature in Translation | 31. ELM104: American Sign Language 4 |
| 6. ELA260: Arab Cinema: Cultural Insights through Film | 32. ELM210: Sign Language Linguistics |
| 7. ELC101: Elementary Modern Chinese 1 | 33. ELN194: The Puerto Rican Community Minority Group Experience |
| 8. ELC102: Elementary Modern Chinese 2 | 34. ELP201: Modern Polish Literature |
| 9. ELC105: Chinese for Heritage Speakers | 35. ELR101: Elementary Russian 1 |
| 10. ELC201: Modern Chinese Literature | 36. ELS101: Elementary Spanish 1 |
| 11. ELC202: Contemporary Chinese Literature | 37. ELS102: Elementary Spanish 2 |
| 12. ELC203: Classic Chinese Literature | 38. ELS103: Intermediate Spanish 1 |
| 13. ELF101: Elementary French 1 | 39. ELS105: Spanish for Heritage Speakers 1 |
| 14. ELF102: Elementary French 2 | 40. ELS200: Latin American Literature I |
| 15. ELF201: French Literature from a Global Perspective | 41. ELS201: Latin American Literature II |
| 16. ELF250: Contemporary Francophone Lit in Translation | 42. ELS204: Latin American Civilizations |
| 17. ELI101: Elementary Italian 1 | 43. ELS205: Latin American Civilizations |
| 18. ELI102: Elementary Italian 2 | 44. ELS209: Spanish Grammar and Usage |
| 19. ELJ101: Elementary Japanese 1 | 45. ELS210: Advanced Spanish Composition |
| 20. ELJ102: Elementary Japanese 2 | 46. ELS250: Contemporary Latin American Fiction in Translation |
| 21. ELJ103: Intermediate Japanese 1 | 47. ELT105: Tibetan for Heritage Speakers |
| 22. ELJ104: Intermediate Japanese 2 | 48. ELV105: Bengali for Heritage Speakers |
| 23. ELJ250: Japanese Literature in Translation | 49. ELV201: Modern Bengali Literature |
| 24. ELK101: Elementary Korean 1 | 50. ELZ101: Elementary Portuguese 1 |
| 25. ELK102: Elementary Korean 2 | 51. ELZ102: Elementary Portuguese 2 |
| 26. ELK103: Intermediate Korean 1 | |

If you want to learn more about individual courses, please visit <https://bit.ly/LaGCC-ML> for the latest information about the modern language courses.

Contact Information for the Modern Languages Program

If you have questions about the modern language (ML) courses or have difficulty in registering for the ML courses, please contact following staff members for assistance.

- Technical questions about registration (e.g., how to use CUNYFirst):
 - registrar@lagcc.cuny.edu
- General question about language-related courses (Modern Languages, ESL, Education, Linguistics etc):
 - ELA@lagcc.cuny.edu
- Questions about the ML courses (e.g., textbook, syllabus etc):
 - Luis Guzmán Valerio, Coordinator of the Modern Languages and Literatures Program
lguzmanvalerio@lagcc.cuny.edu
 - Julio Rosario, Coordinator of the Modern Languages Lab
jrosario@lagcc.cuny.edu