



LAGUARDIA WIFI – LOGIN INSTRUCTIONS

WITH DEVICE SPECIFIC INSTRUCTIONS FOR APPLE, WINDOWS, ANDROID, MAC

Student Login Instructions

Username: firstname.lastname

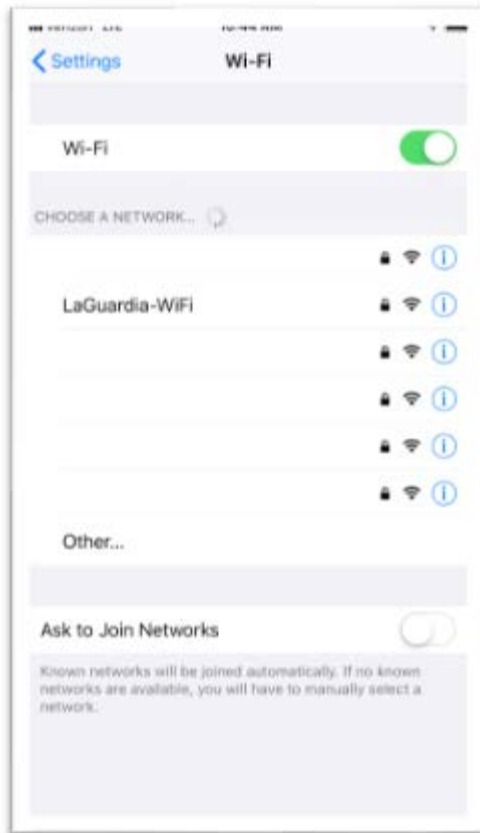
Password: Your eight digit CUNYfirst ID and the last two digits of your birth year

CUNYfirst & eMail Look Up

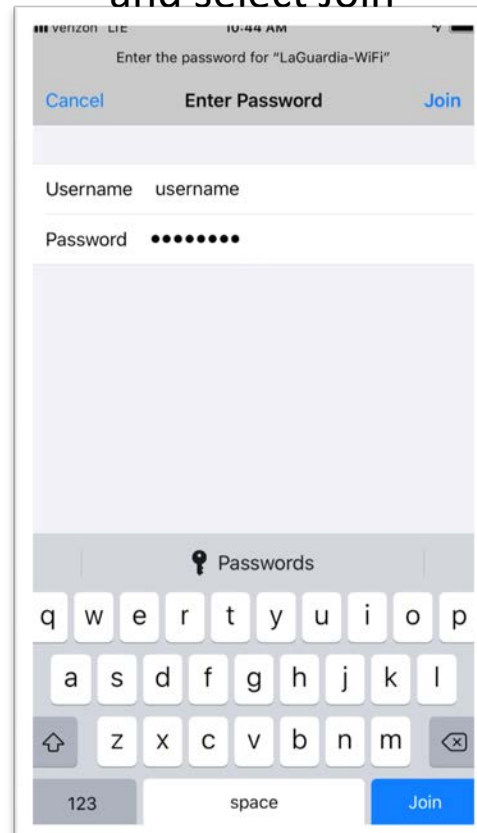
<https://apps.laguardia.edu/lookupID/>

APPLE IPHONE

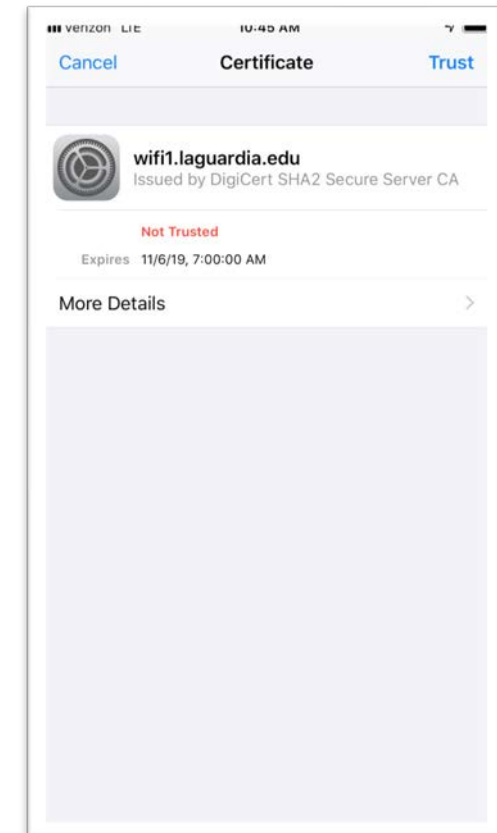
Select LaGuardia-WiFi from your list of SSIDs



Type your username and password and select Join

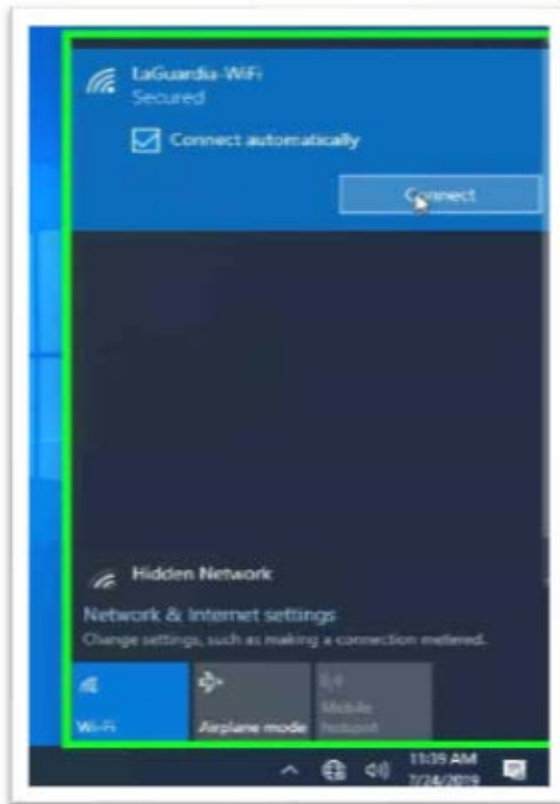


Select Trust

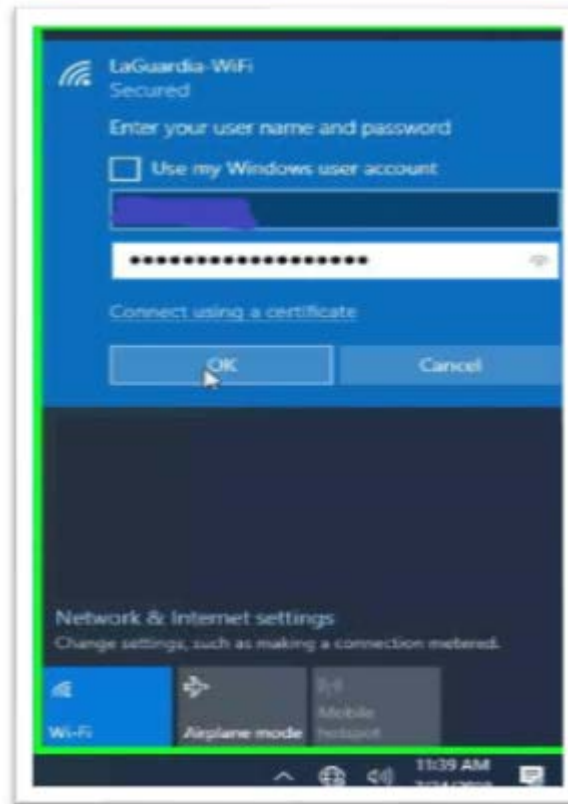


WINDOWS 10

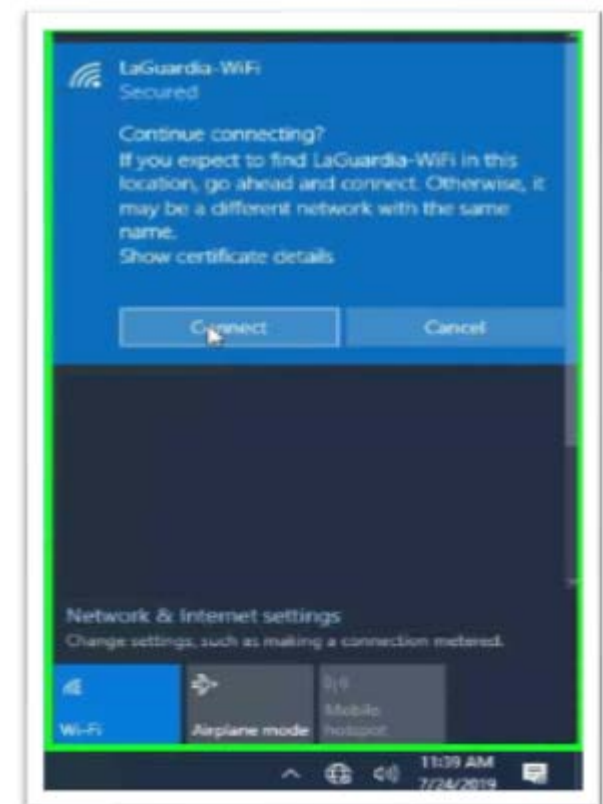
Select LaGuardia-WiFi
from your list of SSIDs
and click connect



Type your username
and password
And click OK



Click Connect



ANDROID

Select LaGuardia-WiFi

EAP method: PEAP

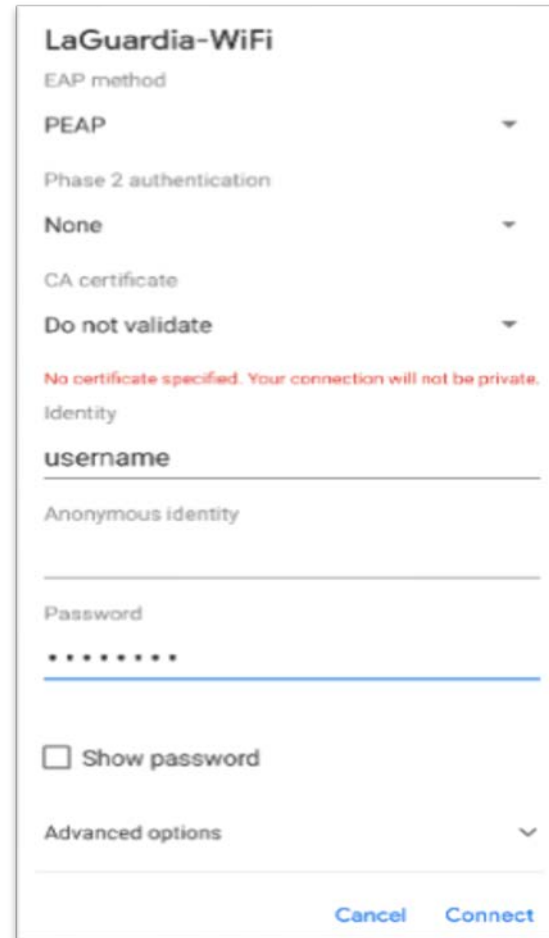
Phase 2 authentication: None

CA certificate: Do not validate

Identity: <Your Username>

Password: <Password>

Click Connect



The screenshot shows the configuration screen for a Wi-Fi network named "LaGuardia-WiFi". The settings are as follows:

- EAP method: PEAP
- Phase 2 authentication: None
- CA certificate: Do not validate
- Identity: username
- Password: [masked with dots]
- Show password:
- Advanced options: [expanded]

At the bottom, there are "Cancel" and "Connect" buttons. A red warning message is visible: "No certificate specified. Your connection will not be private."

Note:

EAP method:
Select **TTLS** if PEAP is not available on your device and use the same instructions as provided for authentication



The screenshot shows the configuration screen for a Wi-Fi network named "LaGuardia-WiFi". The EAP method is set to TTLS.

- EAP method: TTLS

APPLE MAC

Select LaGuardia-WiFi
from your list of SSIDs



Type your username
and password
And click Join

