

Needle Safe II Installation and Best Practices

Mounting Instructions:

For horizontal surface mount (countertop, medication cart, IV tray, etc.) make sure recapping column is tilted towards you. For vertical surface mount (wall, patient bed headboard, etc.) make sure recapping column is tilted towards the ceiling.

1. Select a clean, even surface.
2. Slice mounting bracket backwards (see arrows Figure 1) to disengage the unit.
3. Apply closed special adhesive tape to the underside of the mounting bracket as shown in Figure 1.
4. Position mounting bracket, making sure the tongue at the front end is facing (closer to) you.
5. Peel off adhesive liner and press bracket firmly against mounting surface to secure a strong bond.
6. Slide NeedleSafe II™ backwards into bracket until side flanges are full engaged. See Figure 1.

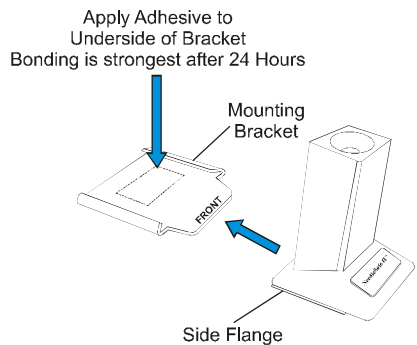


Figure 1

Instructions for Using NeedleSafe IITM

1. Prior to using a needle-and-syringe assembly for injection or for drawing blood or medication, firmly insert the entire assembly, needle cap first, into the Universal Gripper Core™. See Figure 1.
2. Pull syringe (Do Not Twist) to uncap the needle. The needle cap is now securely held by friction within the Universal Gripper Core™. See Figure 2.

Recap by inserting the needle back into the needle cap, rotating the entire assembly and pulling the syringe and cap out of the base.

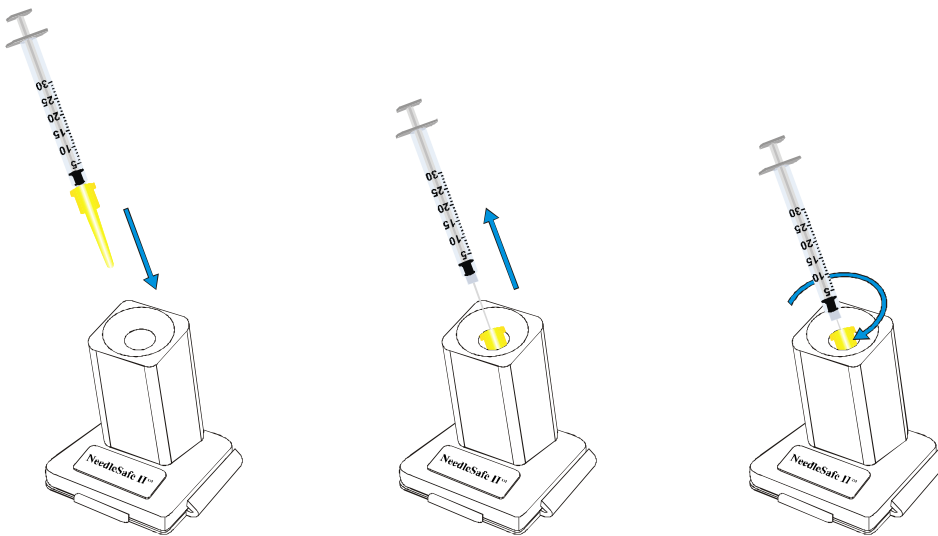


Figure 2

Best Practices

Sometimes the cap will stick in the device when you are trying to pull it out, or the cap will not come off the syringe. There are work arounds for these problems.

1. Using alcohol and a q-tip swap clean the inside of the tube on the device.
2. If the cap still sticks or will not come off the syringe then use the device as a holder for the cap. Take the cap off with one hand and place it in the device. When you are ready to recap, the cap will be in the device, just place the syringe in gently (do not press too hard), and turn clockwise and remove the syringe.