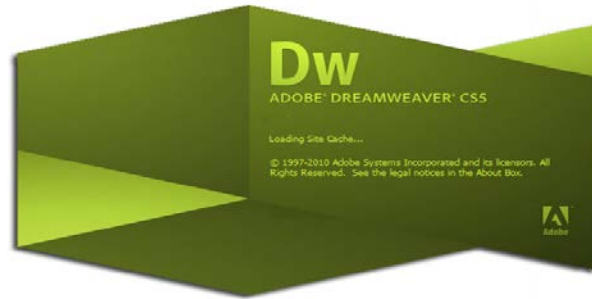




DARE TO DO MORE



Overview

Dreamweaver gives you many options when it comes to setting the properties for your webpages. Within the "Page Properties" dialog box, you can set the appearance of your page, name your page and set other important properties that will not only enhance your website, but will also improve the usability of your website

In this tutorial we will use the website already created in a previous workshop

WELCOME TO MY WEB SITE

HOME

ABOUT US

EMAIL US



Lorem Ipsum is simply dummy text of the printing and typesetting industry. Lorem Ipsum has been the industry's standard dummy text ever since the 1500s, when an unknown printer took a galley of type and scrambled it to make a type specimen book. It has survived not only five centuries, but also the leap into electronic typesetting, remaining essentially unchanged. It was popularised in the 1960s with the release of Letraset sheets containing Lorem Ipsum passages, and more recently with desktop publishing software like Aldus PageMaker including versions of Lorem Ipsum.

LaGuardia Community College

31-10 Thomson Ave, Long Island City, New York 11101

Created by ISMD's Dept. Training Team.

USING TABLES

If you click on one of the table borders, you can view your table properties in the Properties window.



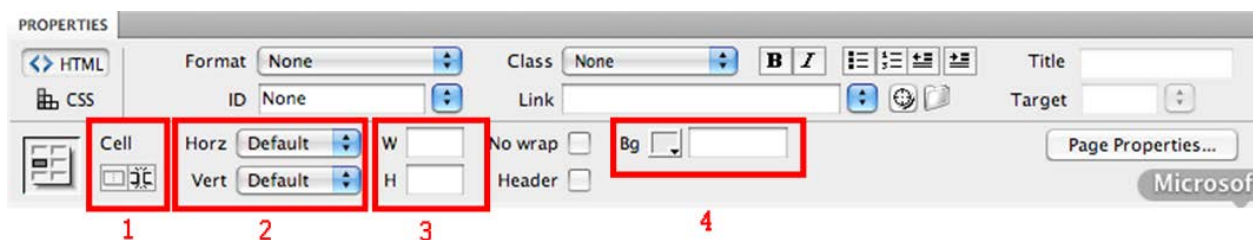
In the properties section of this window you can:

1. name your table
2. change the number of rows and columns in the table;
3. change the width of the table (using percent: this will make the table expand and contract as the user changes the size of the window) (using pixels: this will make the table a set number of pixels no matter what size the user's window is);
4. change the Cell Pad: this is the number of pixels that come between the border of cells and the content of cells.
5. change the Cell Space: this is the number of pixels that come between the borders of each cell.
6. change the alignment: this is the position of the table on the left or right edge, or in the center of the page.
7. change the border: this is the number of pixels that make up the thickness of cell borders.

Properties of cells inside table

Once the properties of the table have been set, you can also adjust the properties of individual cells within the table by clicking inside the cell.

In the top section of this window you can format the text inside the table cell. In the bottom section of this window you can:



1. Merge and split cells.
2. Change the alignment of the content horizontally and vertically.
3. Change the width and the height of the cell (numbers alone represent pixels, add a percent sign to make the cell a certain percentage of the whole table).
4. Change the background color for the single cell.

Setting Page Colors with the Page Properties Dialog Box

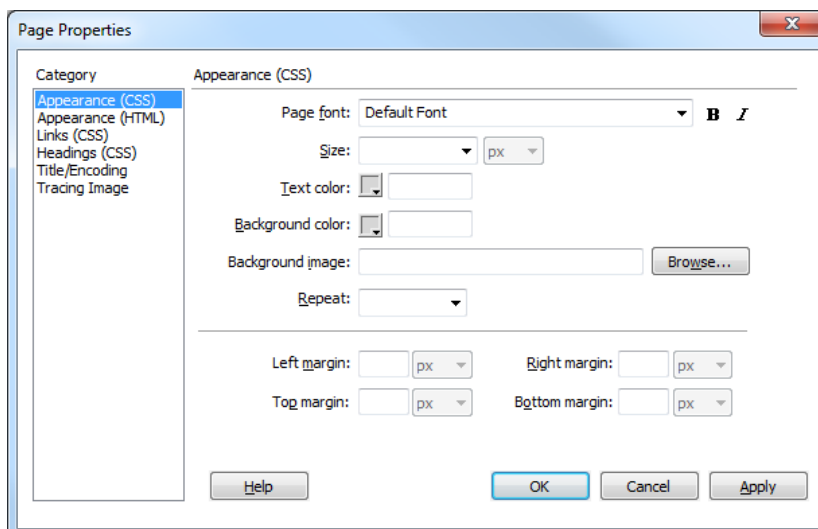
Colors and backgrounds can add a lot of character to your web pages. Text and background color choices can be selected using the *Page Properties* dialog box. Keep in mind while choosing colors, not all web browsers will be capable of viewing your exact background and text color combinations. Luckily, in most cases, they will revert to the browser's default colors with no ill effects. Be aware that colorblind users will be unable to decipher pages with certain color combinations.

Accessing the Page Properties Dialog Box

The *Page Properties* dialog box allows you to adjust page elements such as the title, background image, colors, and margins.

Step 1 - With your website already open in Dreamweaver, from the *Modify* menu, select **Page properties** OR Press [Ctrl] + [J]

The *Page Properties* dialog box appears.



Setting Page Colors with the Page Properties Dialog Box

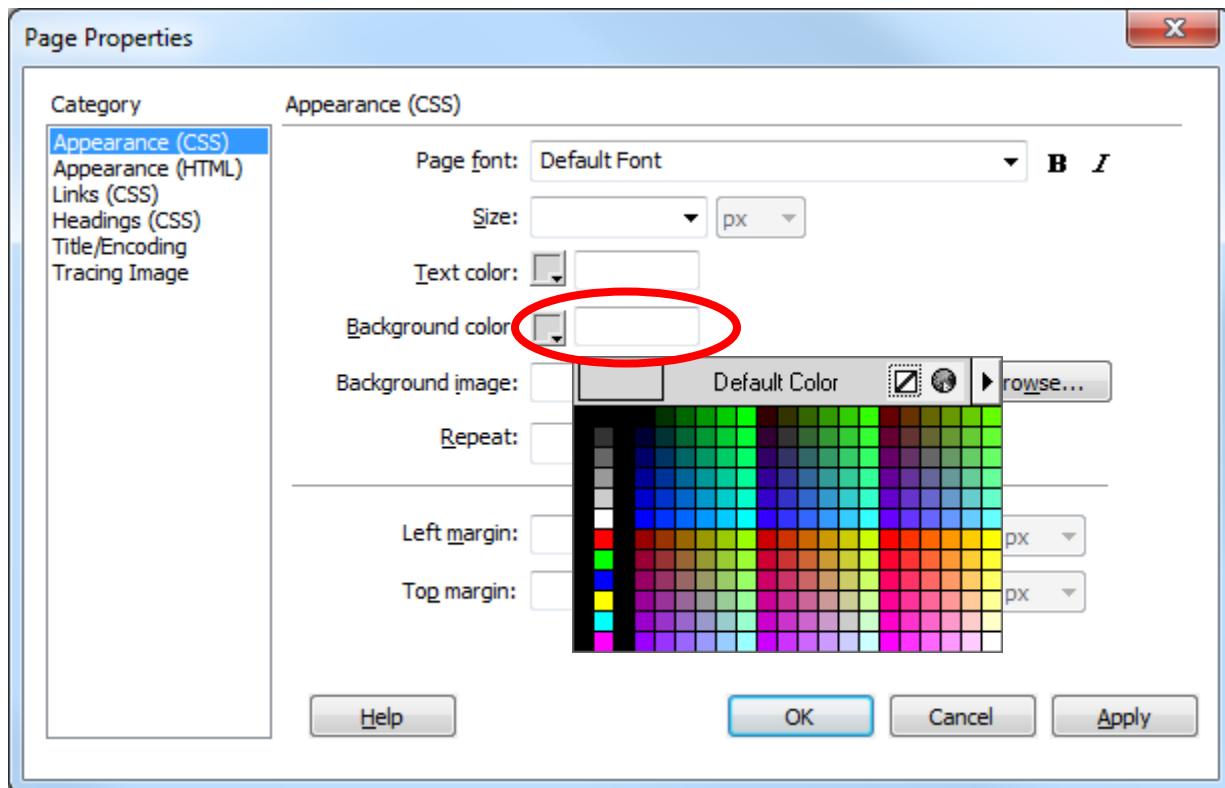
Page colors include background color, text color, link color, visited link color, active link color, and rollover link color. You are able to set these colors in the *Page Properties* dialog box.

Setting Page Colors: Color Box Option

This option allows you to choose color from a color palette. If you want more options for setting page colors

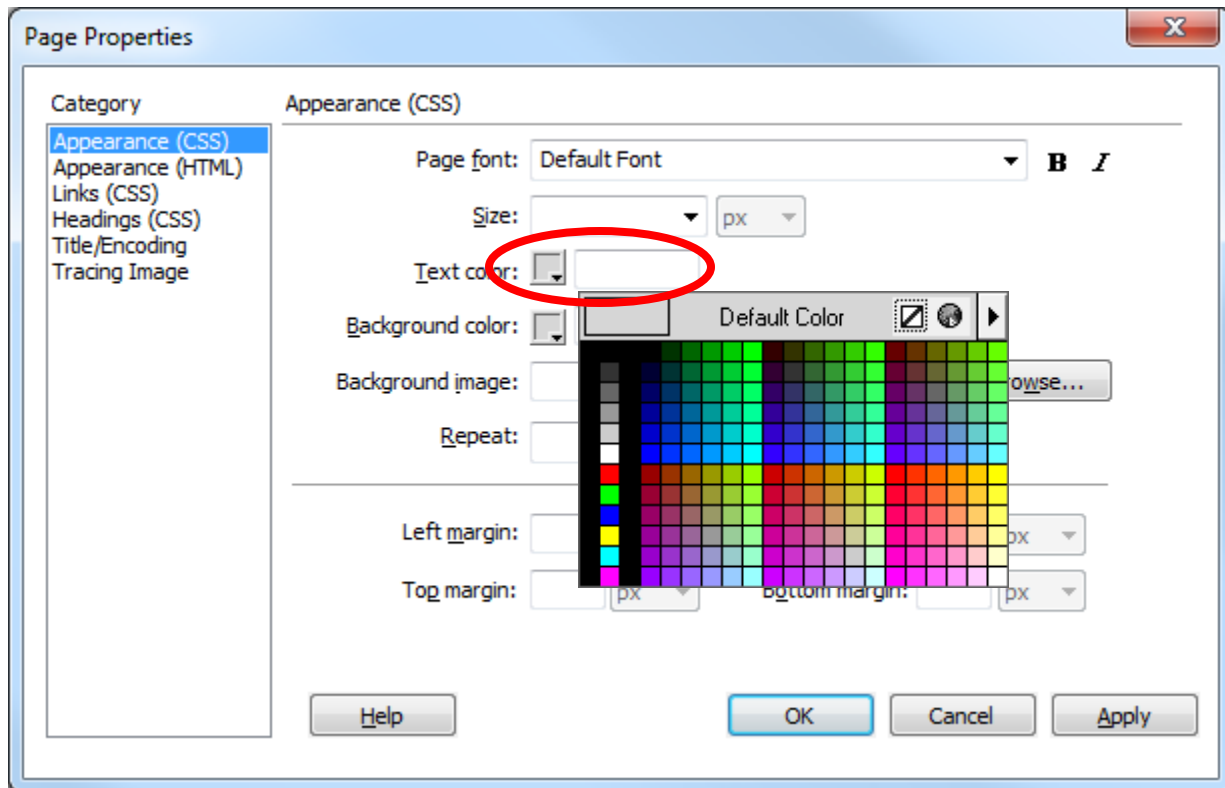
Step 2 - Under *Category*, select **Appearance (CSS)**

Step 3 - To set the page background color, click **BACKGROUND** color. A color palette appears.



Step 4 - Select the desired color

Step 5 - To set the color for text, click **TEXT** color. A color palette appears.

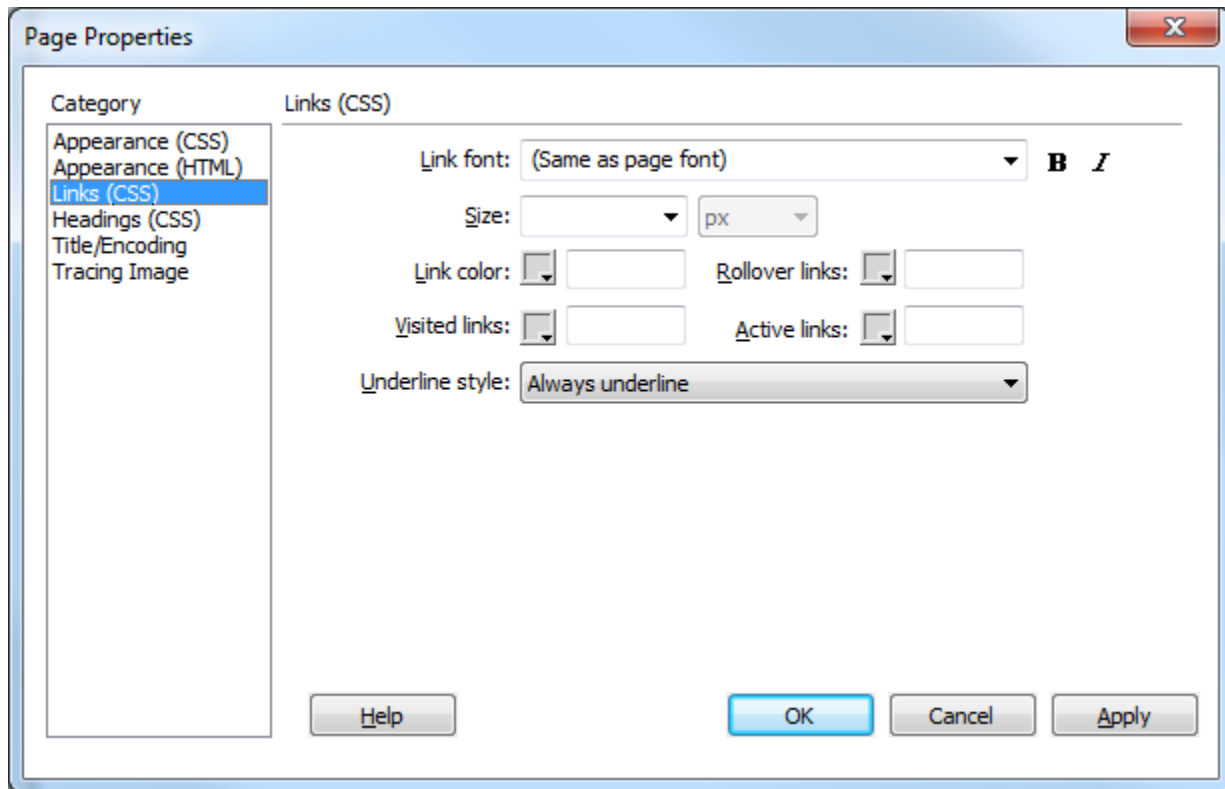


Step 6 - Select the desired color

Step 7 – Next you have the following options you can set.

- Background image- the image you want to select
- Repeat-
- Set this to no-repeat so your background will not tile.
- Set to repeat will tile your background, this is the default for a page.
- repeat-x will repeat horizontally
- repeat-y will repeat vertically only

Step 8 - Under *Category*, select **Links (CSS)**

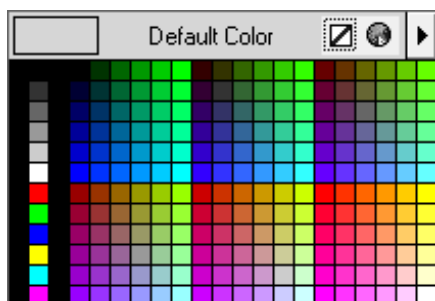


Step 9 – Under **LINK FONT**, you can change the font family, boldness, and italics on your links with this option. This will affect all links that are text, but won't change links that are on images or other objects.

Step 11 – Under **Size**, You can also change the size of your links. I recommend leaving this blank, as then links will remain the same size as the text. Otherwise, if you change the size, and then create a link in a headline, the headline might take the link font size, rather than your preferred headline size.

Step 10 - Click the appropriate link color box (e.g., **Link color**, **Visited links**, **Rollover links**, **Active links**)

A color palette appears.



Select the desired color

HINT: Remember to test the compatibility of the color of your background with the color of your text and hyperlinks. Though the colors individually may look great, when you place them all together on one page you may find some colors more difficult to read than others.

Step 12 – A common update to links is to remove the underline. The **Underline style section** in Dreamweaver allows you to set the underline on links to always underlined, never underlined, underlined on rollover, or remove the underline on rollover.

