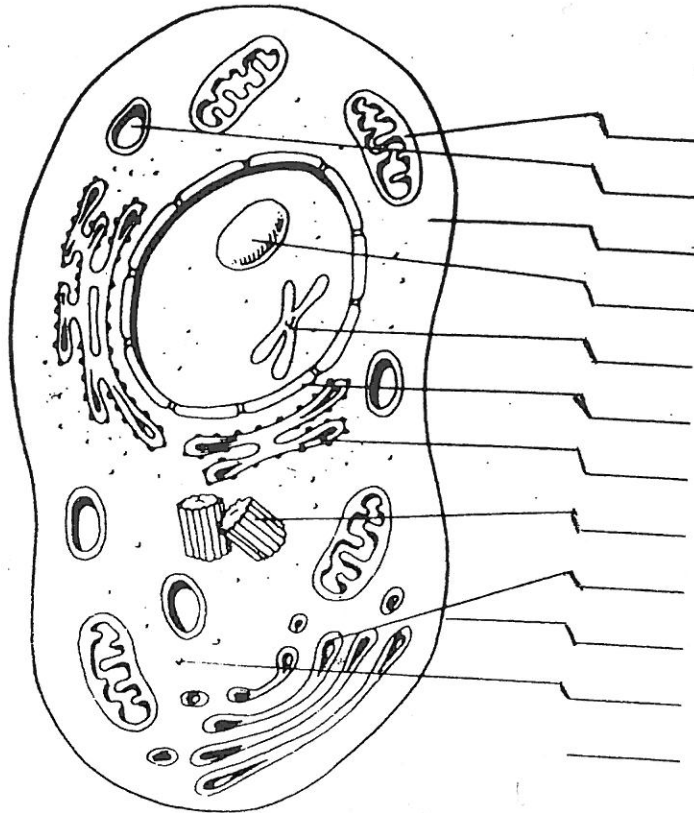
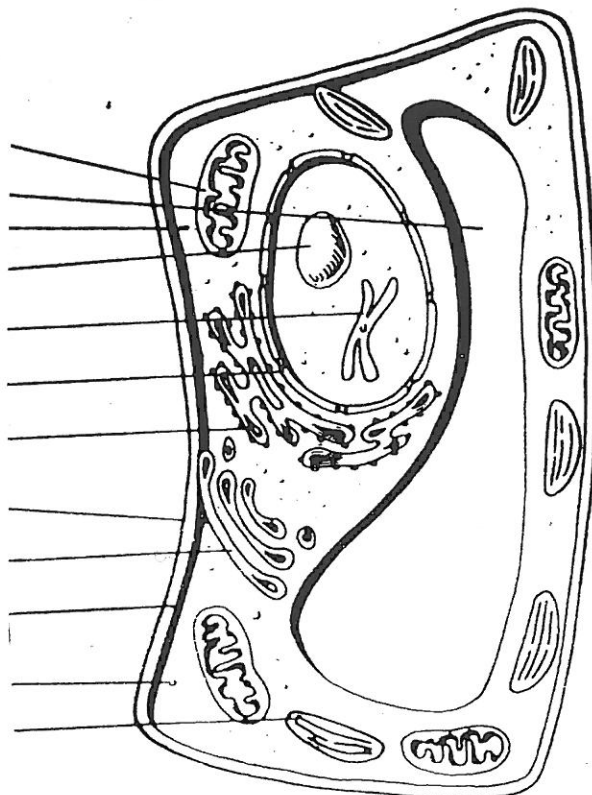


LABEL THE FOLLOWING DIAGRAMS

ANIMAL CELL



PLANT CELL

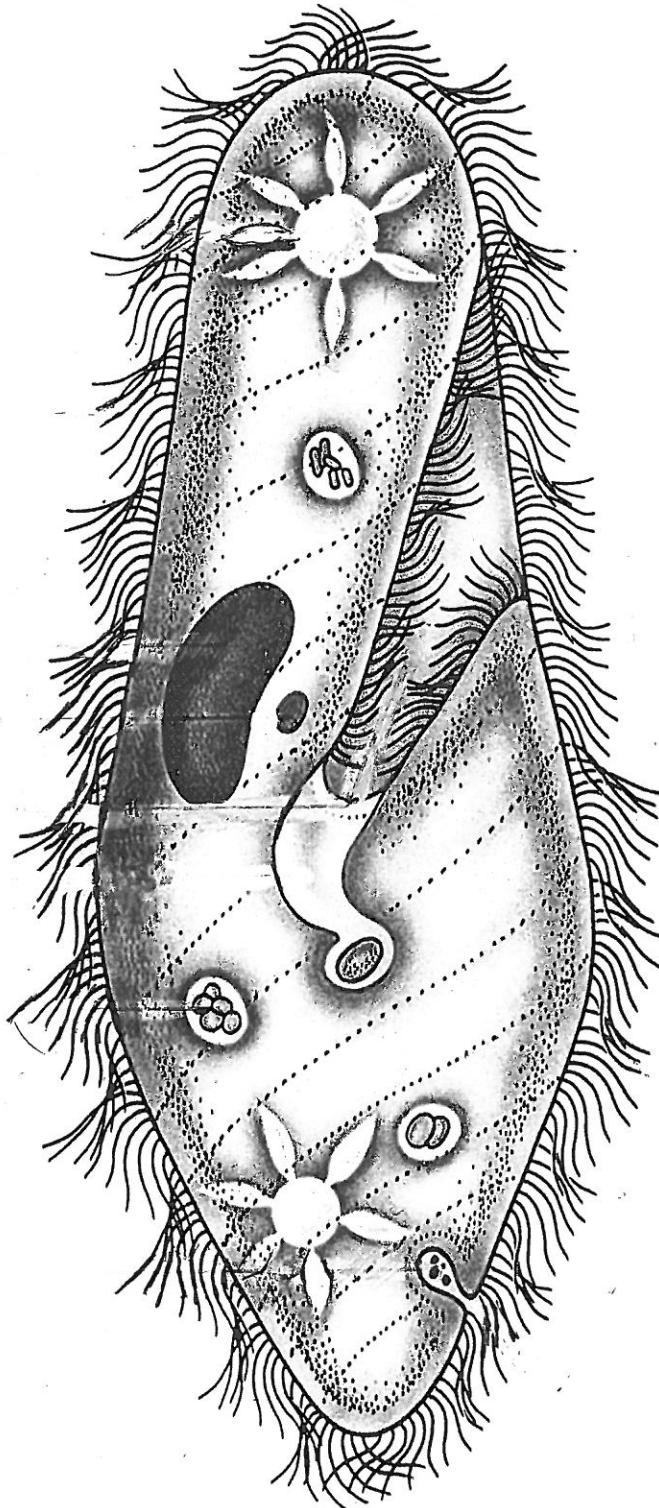


PARAMECIUM

LABEL THE FOLLOWING STRUCTURES:

Cell membrane
Cytoplasm
Nucleus
Cilia

Oral groove
Food vacuoles
Contractile vacuoles

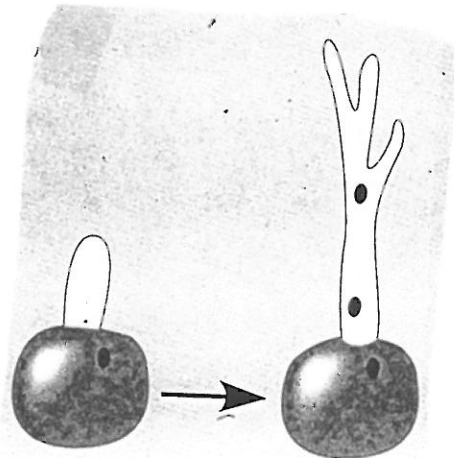
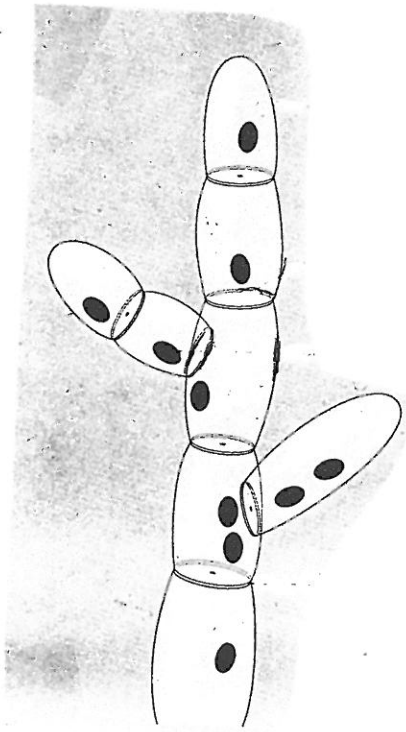


MOLD

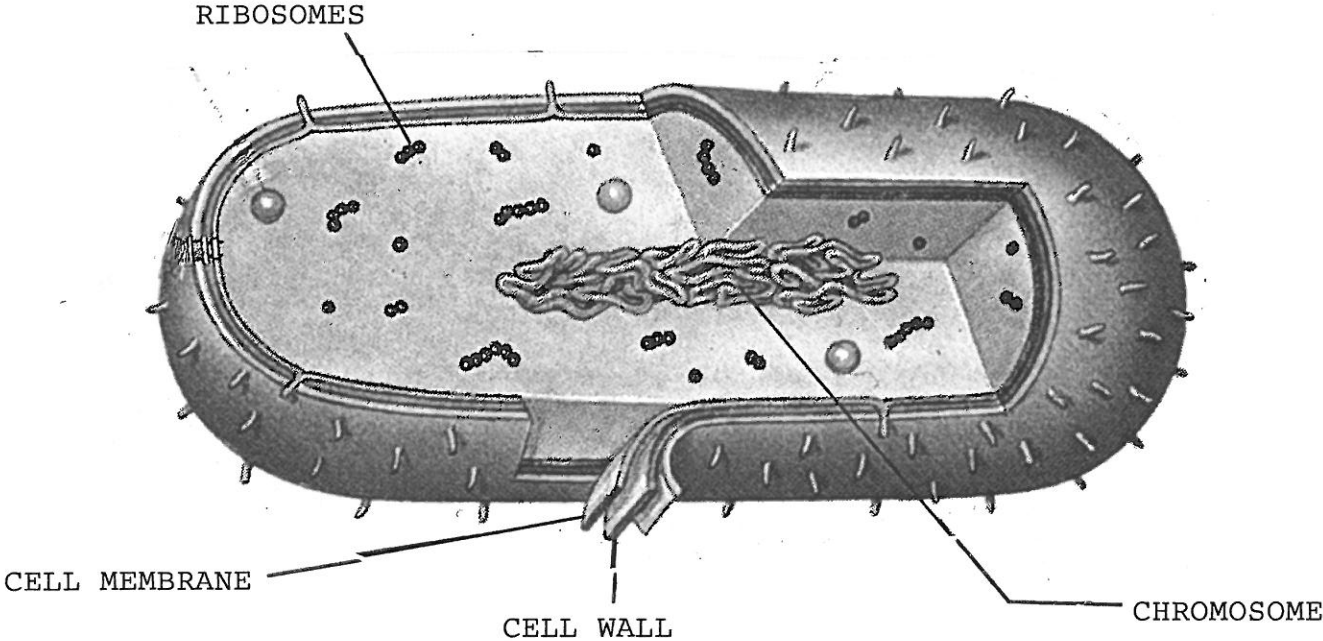
LABEL THE FOLLOWING STRUCTURES:

Hypha
Cytoplasm
Nucleus

Cell membrane
Cell wall
Spore



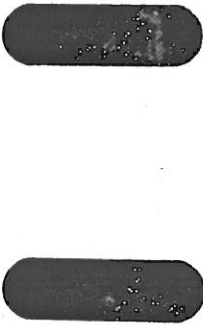
BACTERIAL CELL



Cocci



Bacilli



Spirals

